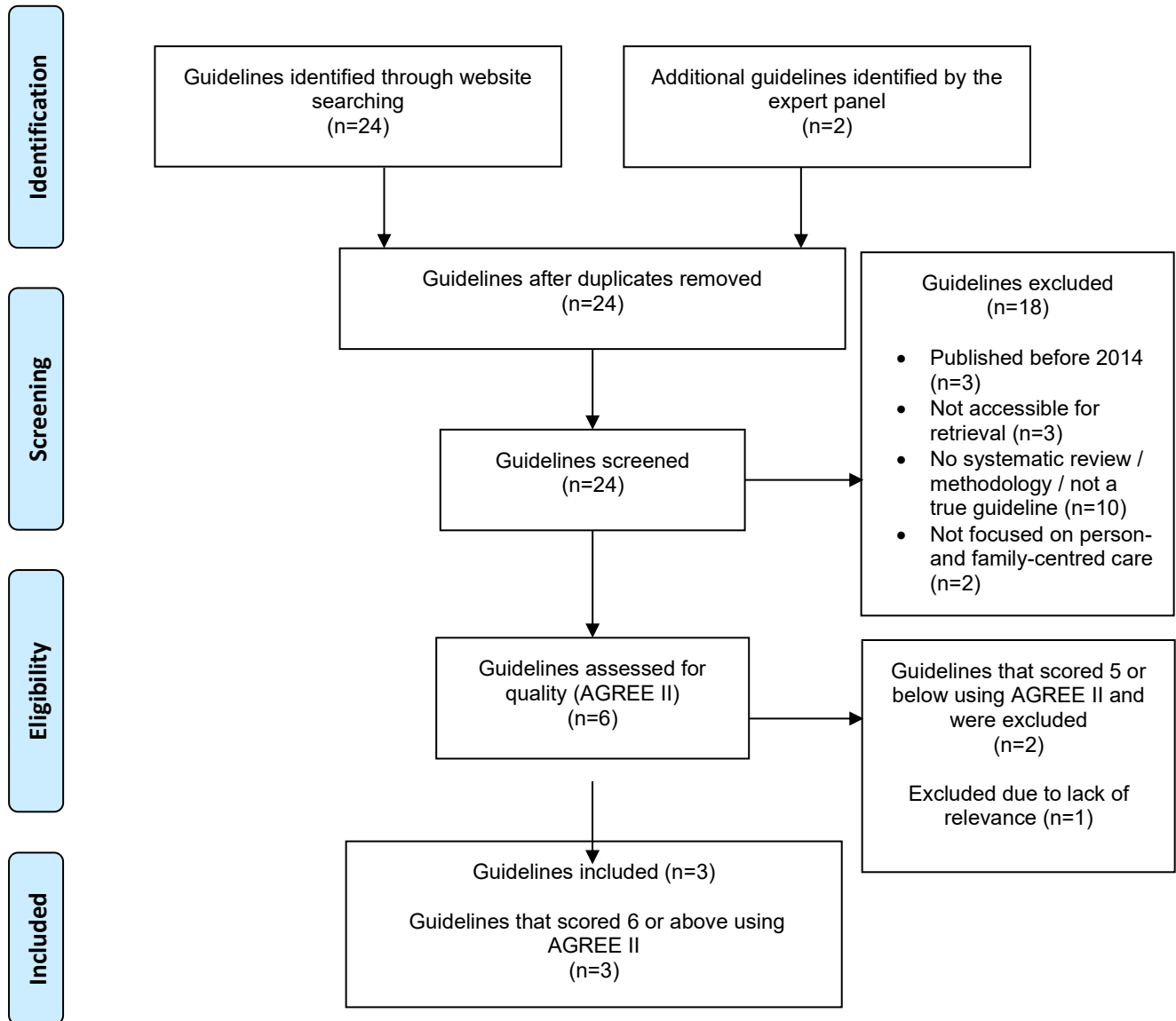


**Registered Nurses' Association of Ontario**  
*People-Centred Care*  
**Third Edition**  
**September 2025**

**PRISMA diagrams for guideline search, systematic reviews and scoping review**

**Guideline review process flow diagram**

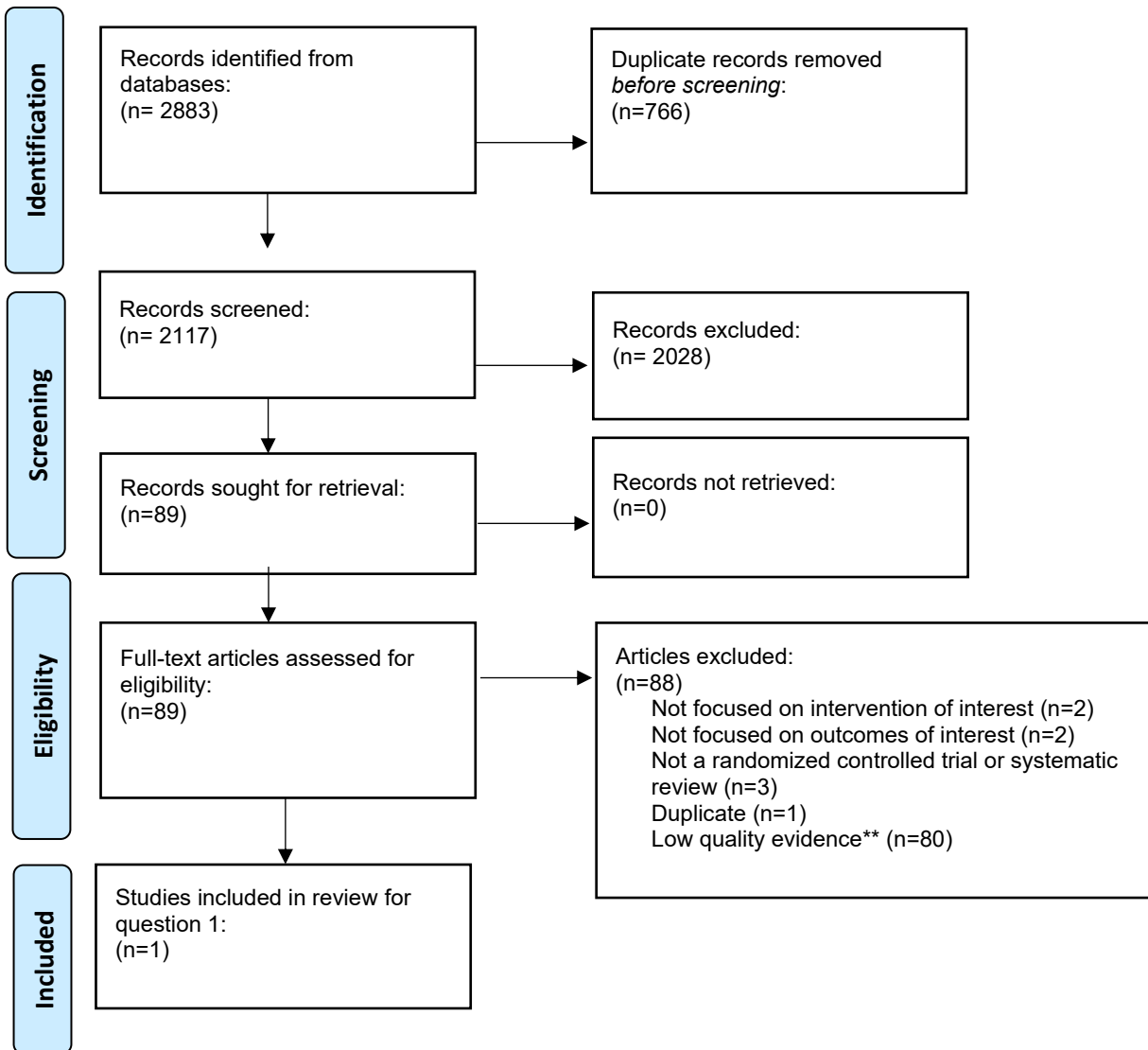


Included guidelines were considered for GRADE-ADOLPMENT and required to have an overall AGREE II score of 6 or more (out of 7) (1). Although the expert panel did not identify any priority recommendations from the existing guidelines to be adopted or adapted for this BPG, 3 guidelines were used as supporting resources.

Source: Adapted from: Page M, McKenzie P, Bossuyt P, et al. The PRISMA 2020 statement: an updated guideline for reporting systematic reviews. Syst Rev. 2021;10(89). Available from: <https://doi.org/10.1186/s13643-021-01626-4>

## Article review process PRISMA diagram for recommendation questions #1

**Recommendation question #1:** Should decision aids used by health providers and people (to support shared decision-making [SDM] about treatment and care) be recommended or not?



\*\*As per GRADE methodology, the best available evidence is prioritized to answer each research question. Primary studies were excluded as a high-quality systematic review existed on the topic that examined the outcomes outlined in the PICO question.

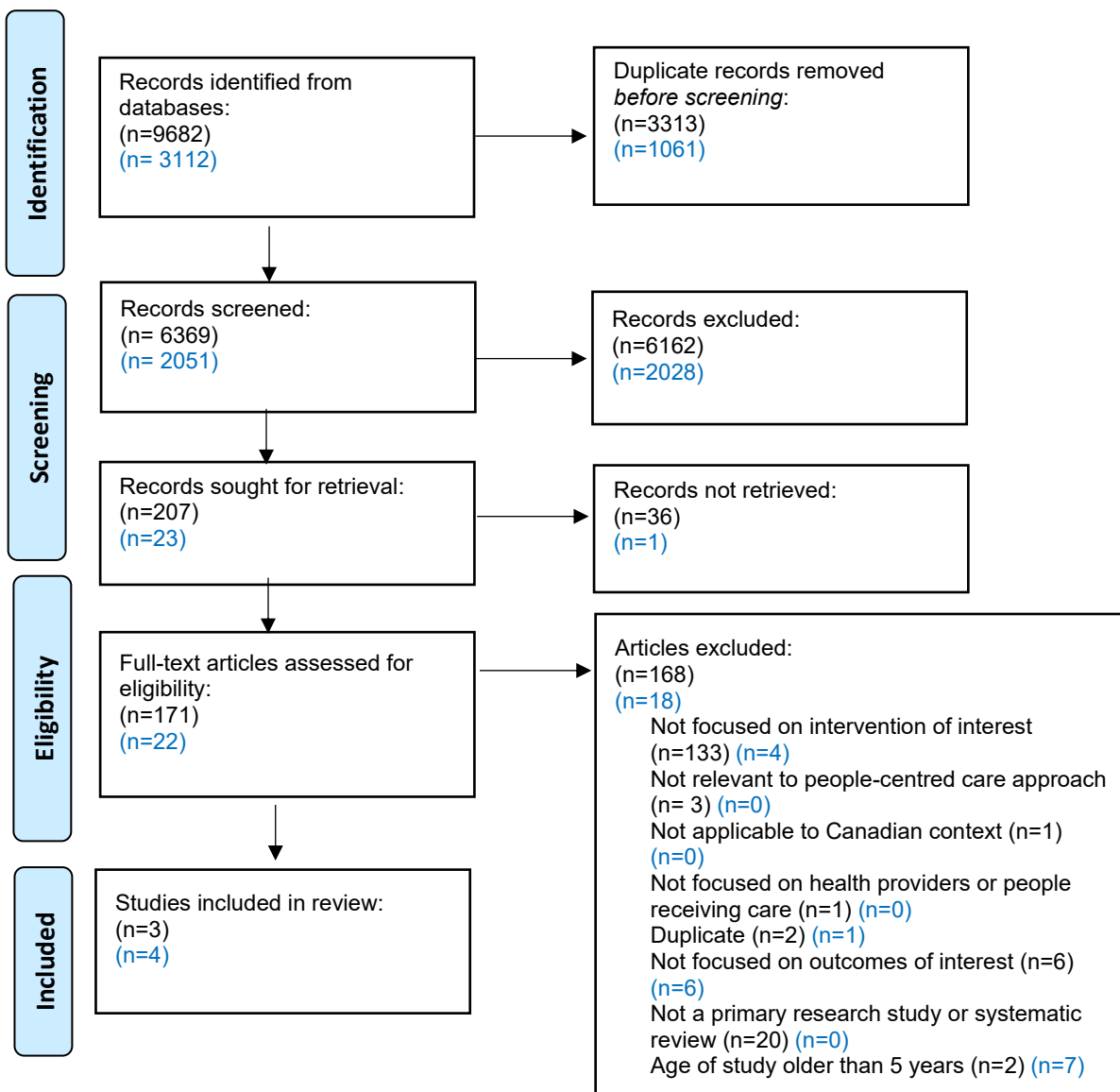
Source: Adapted from: Page M, McKenzie P, Bossuyt P, et al. The PRISMA 2020 statement: an updated guideline for reporting systematic reviews. Syst Rev. 2021;10(89). Available from: <https://doi.org/10.1186/s13643-021-01626-4>

## Article review process PRISMA diagram for recommendation question #2

**Recommendation question #2:** Should sensory-minimizing strategies that address noise and light (used to facilitate people-centred care) be recommended or not?

n = original search

n = update search

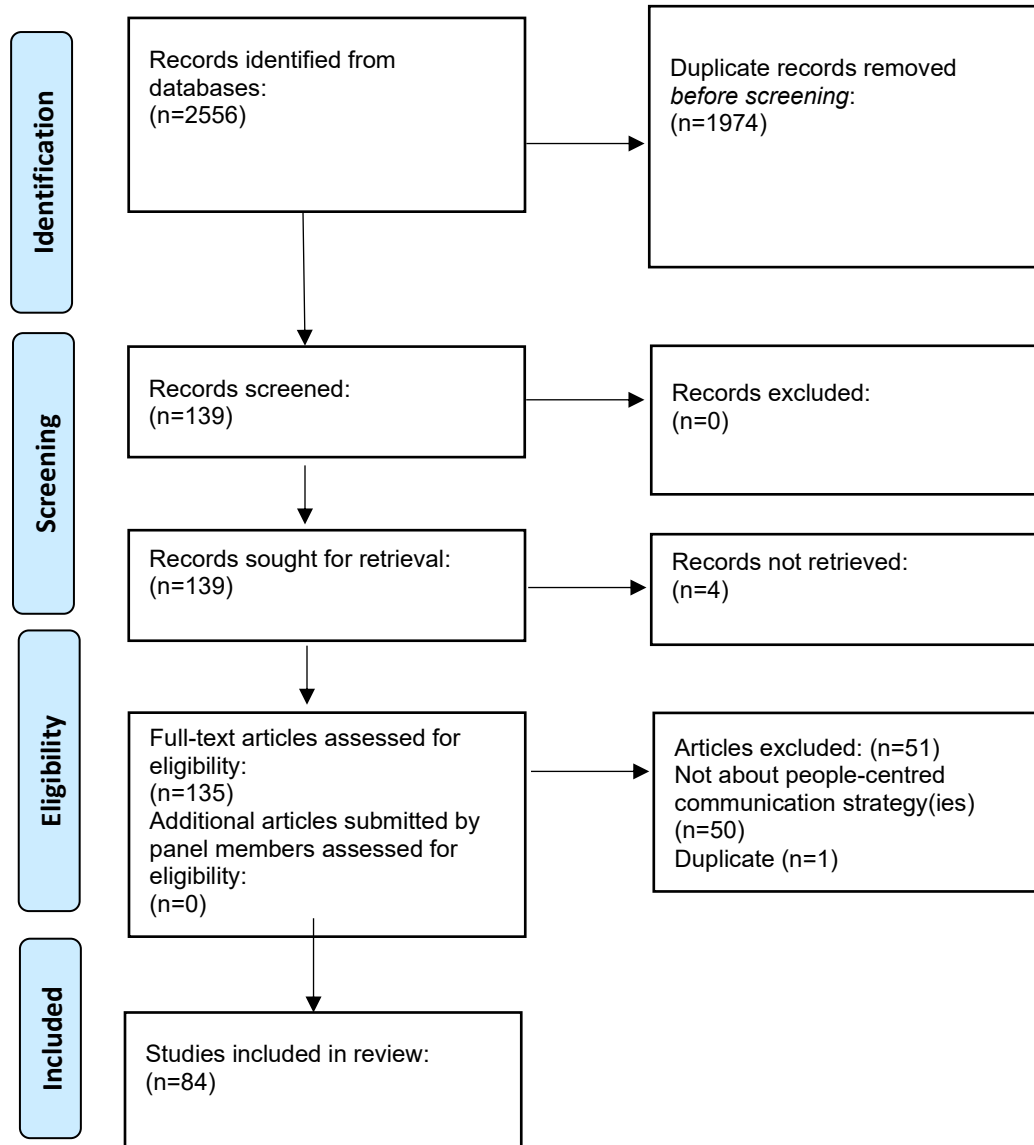


\* As per GRADE methodology, the best available evidence is prioritized to answer each research question. Primary studies were excluded if a high-quality systematic review existed on a topic that examined an outcome outlined in the PICO question.

Source: Adapted from: Page M, McKenzie P, Bossuyt P, et al. The PRISMA 2020 statement: an updated guideline for reporting systematic reviews. Syst Rev. 2021;10(89). Available from: <https://doi.org/10.1186/s13643-021-01626-4>

## Article review process PRISMA Diagram for scoping review

**Scoping review question:** What types of collaborative communication strategies can support nurses and other interprofessional health providers become more adept with people-centred care?



Source: Adapted from: Page M, McKenzie P, Bossuyt P, et al. The PRISMA 2020 statement: an updated guideline for reporting systematic reviews. Syst Rev. 2021;10(89). Available from: <https://doi.org/10.1186/s13643-021-01626-4>

## References

1. Schünemann HJ, Wierioch W, Brozek J, et al. GRADE evidence to decision (EtD) frameworks for adoption, adaptation, and de novo development of trustworthy recommendations: GRADE-ADOLOPMENT. *J Clin Epidemiol.* 2017;81:101-10.