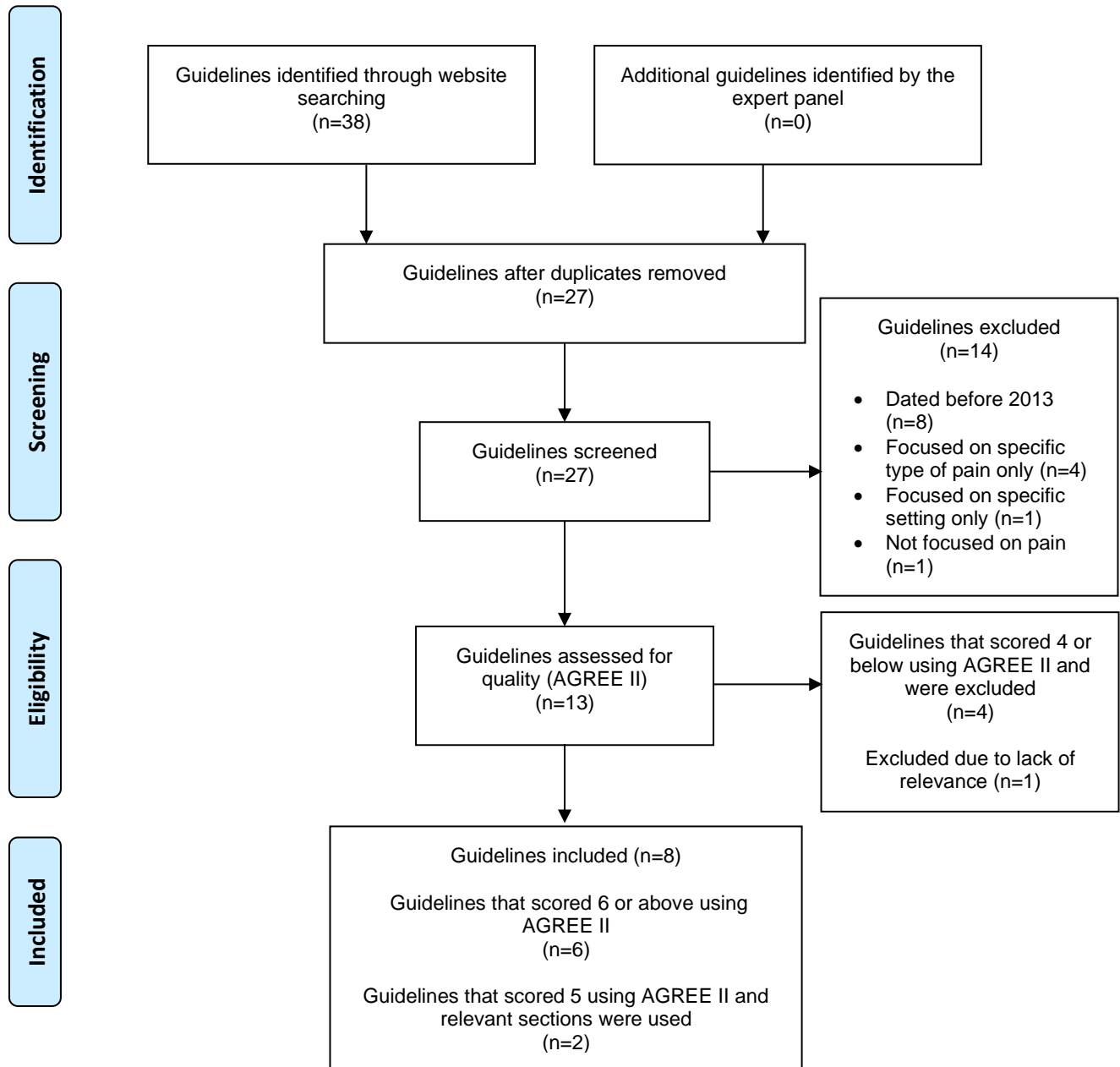


**Registered Nurses' Association of Ontario**  
**Pain: Prevention, assessment and management**  
**Fourth Edition**  
**February 2025**

**PRISMA diagrams for guideline search, systematic reviews and scoping review**

**Guideline review process flow diagram**



Included guidelines were considered for GRADE-ADOLPMENT and required to have an overall AGREE II score of 5 or more (out of 7) (1). Although the expert panel did not identify any priority recommendations from the existing guidelines to be adopted or adapted for this BPG, 8 guidelines were used as supporting resources.

*Source:* Adapted from: Page M, McKenzie P, Bossuyt P, et al. The PRISMA 2020 statement: an updated guideline for reporting systematic reviews. *Syst Rev.* 2021;10(89). Available from: <https://doi.org/10.1186/s13643-021-01626-4>

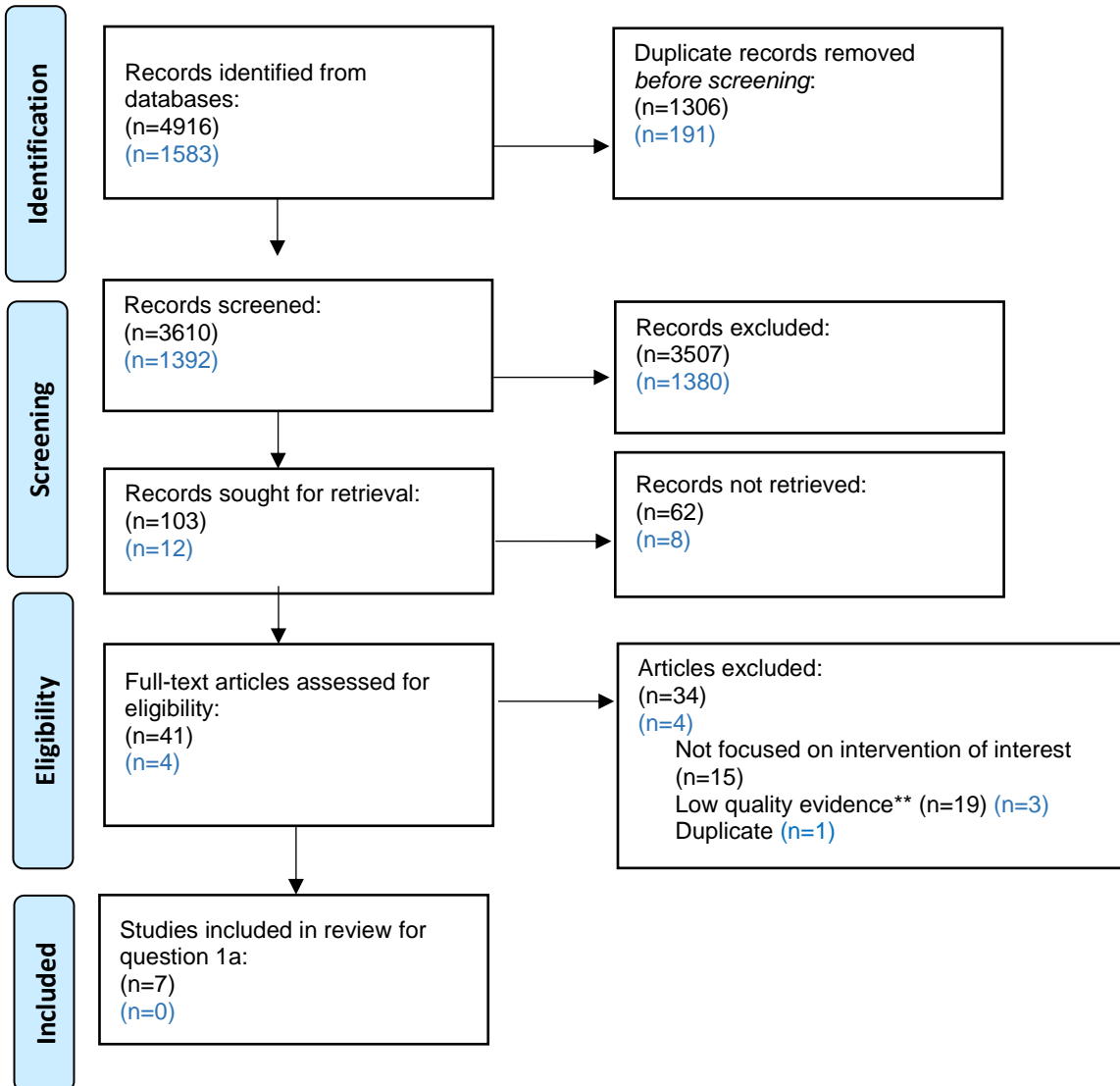
## Article review process PRISMA diagram for recommendation questions #1a and #1b

**Recommendation question #1a:** Should organizational or health system implementation of a specialized interprofessional pain care team be recommended or not?

**Recommendation question #1b:** Should organizational or health system implementation of a specialized pain provider be recommended or not?\*

n = original search

n = update search



\*Question 1b did not have any relevant literature and was removed from the best practice guideline.

\*\*As per GRADE methodology, the best available evidence is prioritized to answer each research question. Primary studies were excluded if a high-quality systematic review existed on a topic that examined an outcome outlined in the PICO question.

*Source:* Adapted from: Page M, McKenzie P, Bossuyt P, et al. The PRISMA 2020 statement: an updated guideline for reporting systematic reviews. *Syst Rev.* 2021;10(89). Available from: <https://doi.org/10.1186/s13643-021-01626-4>

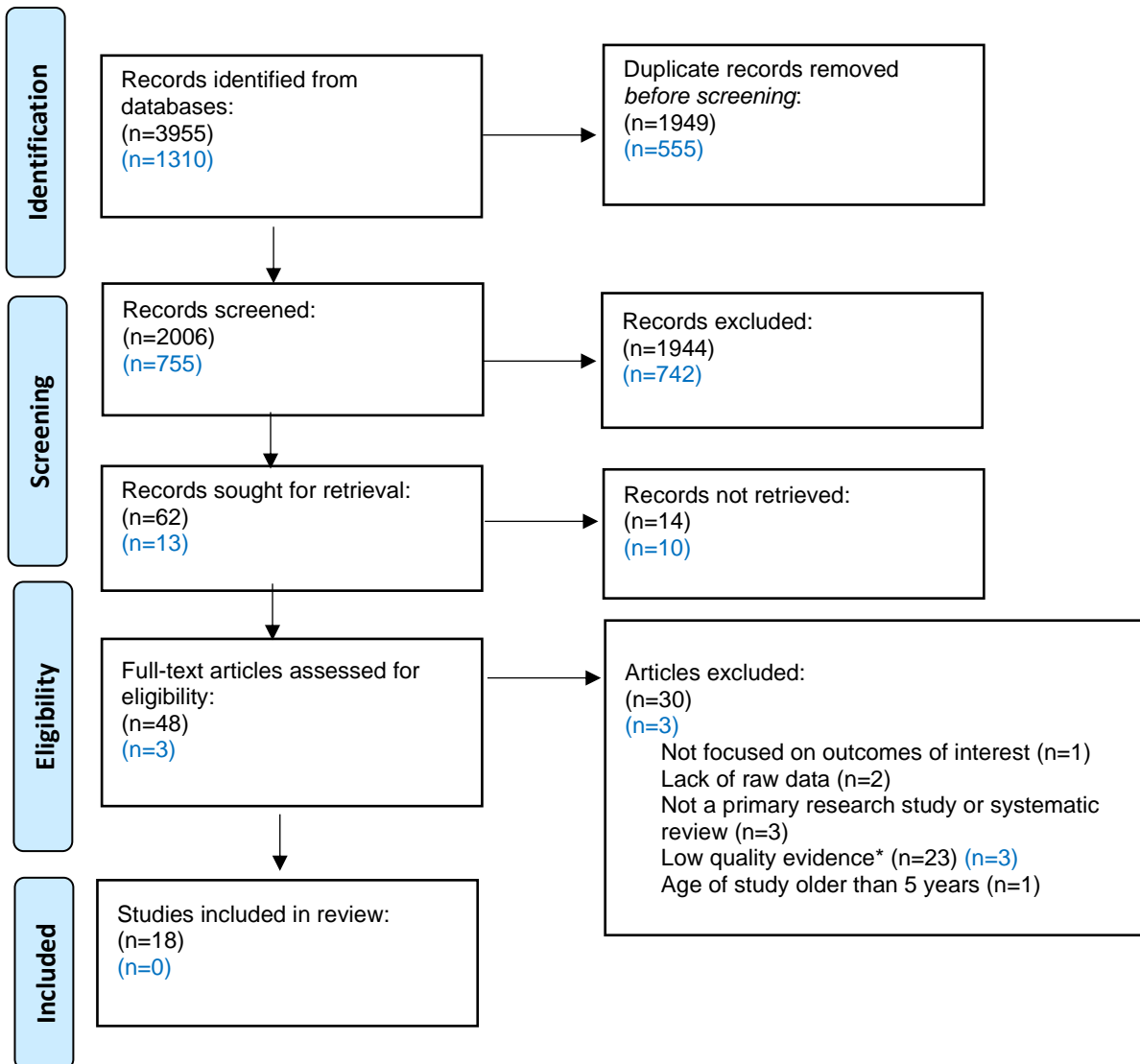
## Article review process PRISMA diagram for recommendation questions #2 and #3

**Recommendation question #2:** Should education on pain assessment, prevention and management strategies for students entering health professions be recommended or not?

**Recommendation question #3:** Should interactive education on pain assessment, prevention and management for health providers be recommended or not?

n = original search

n = update search



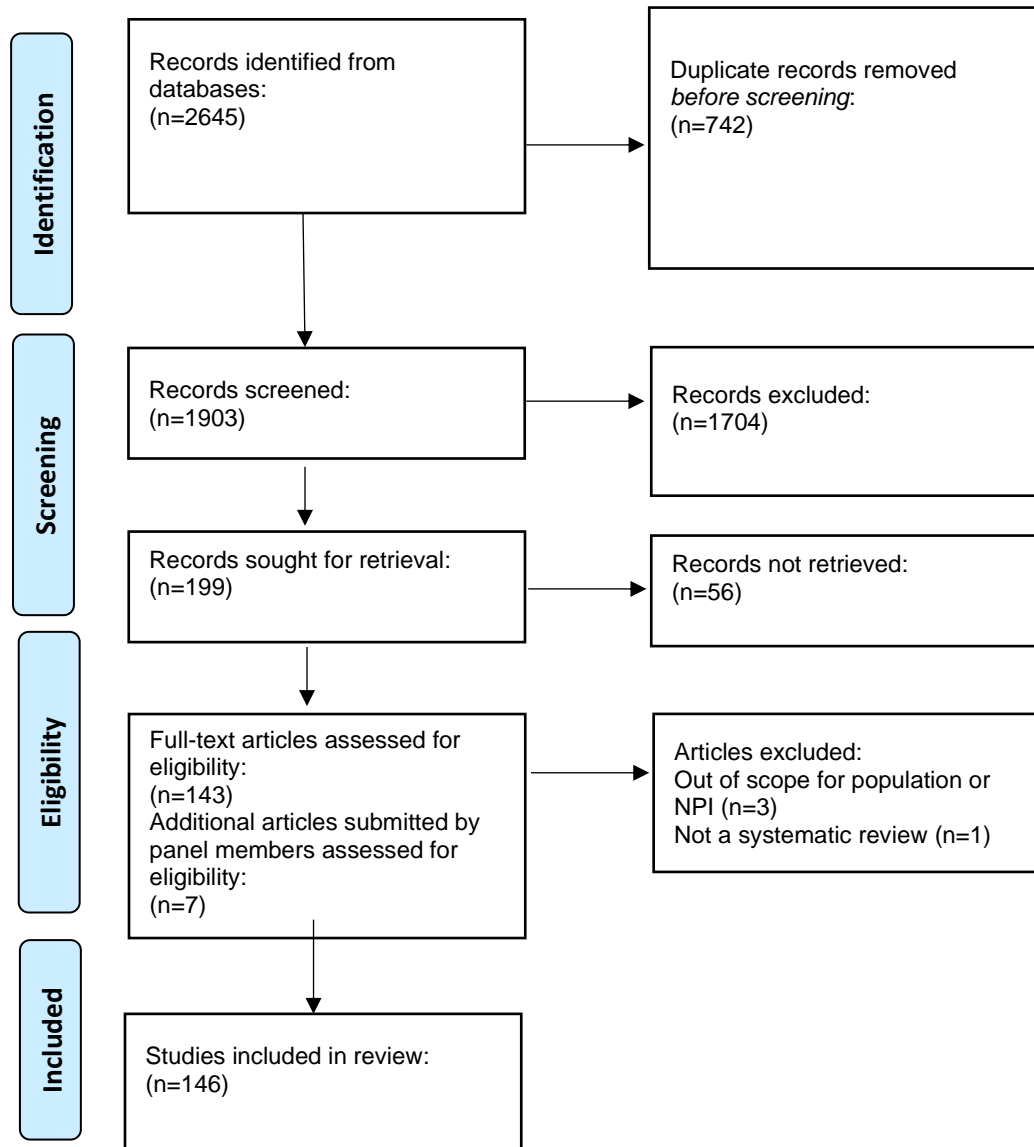
\* As per GRADE methodology, the best available evidence is prioritized to answer each research question. Primary studies were excluded if a high-quality systematic review existed on a topic that examined an outcome outlined in the PICO question.

*Source:* Adapted from: Page M, McKenzie P, Bossuyt P, et al. The PRISMA 2020 statement: an updated guideline for reporting systematic reviews. *Syst Rev.* 2021;10(89). Available from: <https://doi.org/10.1186/s13643-021-01626-4>

## Article review process PRISMA Diagram for scoping review

**Scoping review question:** Should specific non-pharmacological approaches be recommended or not for the management of pain?

n = original search



Source: Adapted from: Page M, McKenzie P, Bossuyt P, et al. The PRISMA 2020 statement: an updated guideline for reporting systematic reviews. Syst Rev. 2021;10(89). Available from: <https://doi.org/10.1186/s13643-021-01626-4>

## References

1. Schünemann HJ, Wierioch W, Brozek J, et al. GRADE evidence to decision (EtD) frameworks for adoption, adaptation, and de novo development of trustworthy recommendations: GRADE-ADOLOPMENT. *J Clin Epidemiol.* 2017;81:101-10.