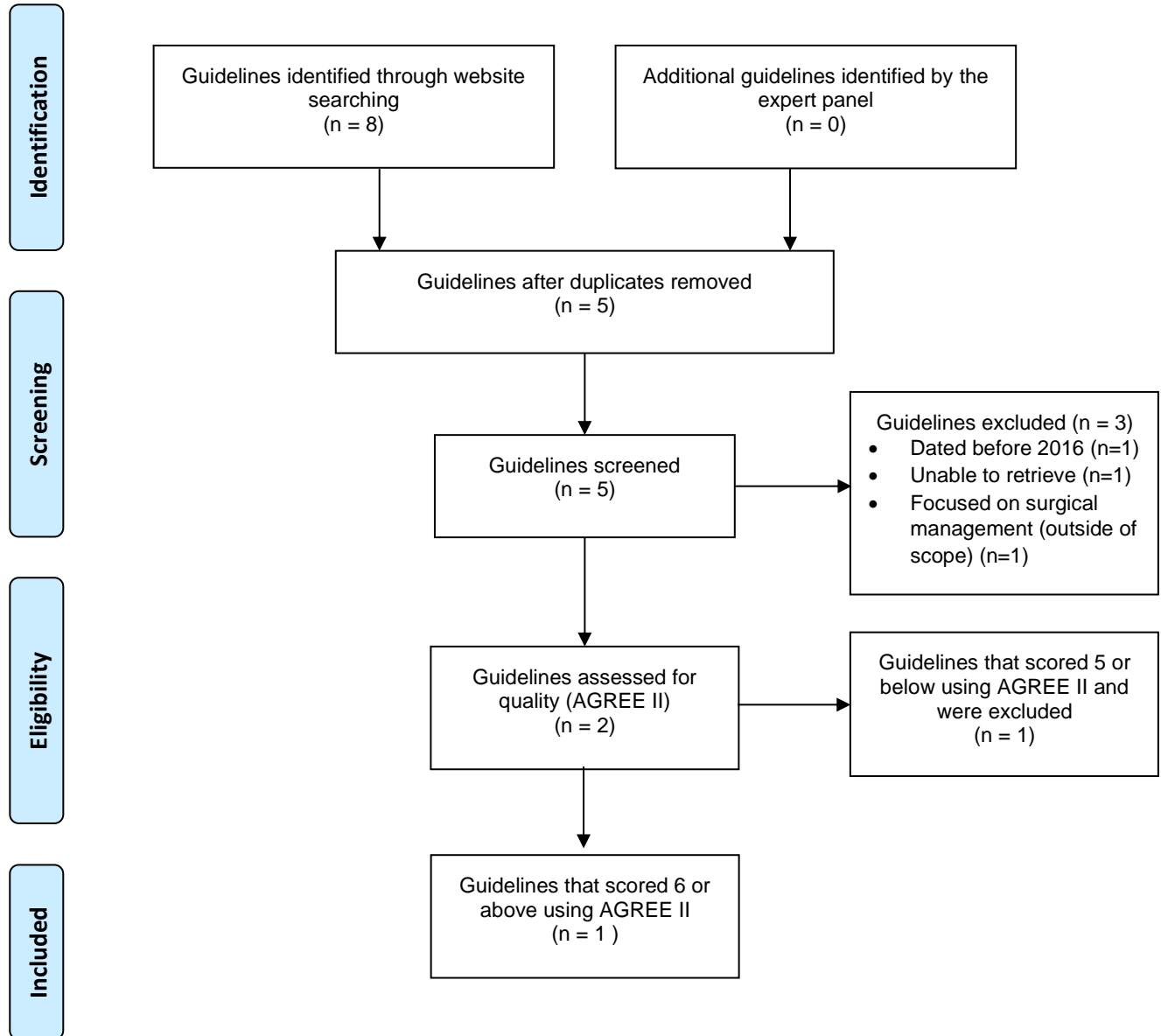


Registered Nurses' Association of Ontario
Pressure injuries management: Risk assessment, prevention and treatment, Fourth edition
November 2024

PRISMA diagrams for guideline search, systematic reviews, and scoping review

Guideline review process flow diagram



Included guidelines were considered for GRADE-ADOLOPMENT and required to have an overall AGREE II score of 6 or more (out of 7) (1). Although the expert panel did not identify any priority recommendations from the existing guidelines to be adopted or adapted for this BPG, two guidelines were used as supporting resources.

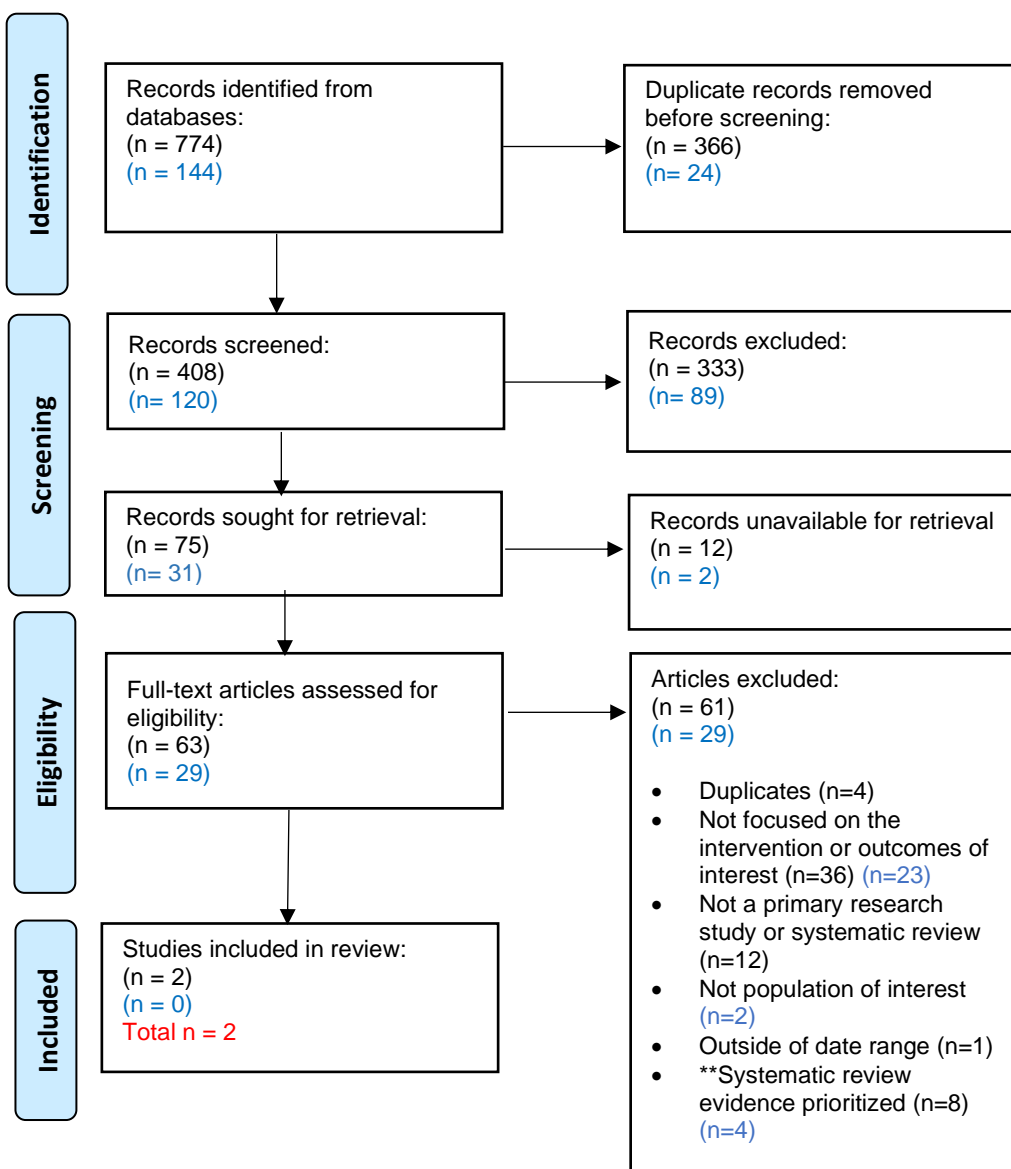
Source: Adapted from: Page M, McKenzie P, Bossuyt P, et al. The PRISMA 2020 statement: an updated guideline for reporting systematic reviews. Syst Rev. 2021;10(89). Available from: <https://doi.org/10.1186/s13643-021-01626-4>

Article review process PRISMA diagram for recommendation question #1

Recommendation question #1: Should the use of health technologies be recommended or not for early detection and assessment of pressure injuries?

n = original search

n = update search



Source: Adapted from: Page M, McKenzie P, Bossuyt P, et al. The PRISMA 2020 statement: an updated guideline for reporting systematic reviews. Syst Rev. 2021;10(89). Available from: <https://doi.org/10.1186/s13643-021-01626-4>

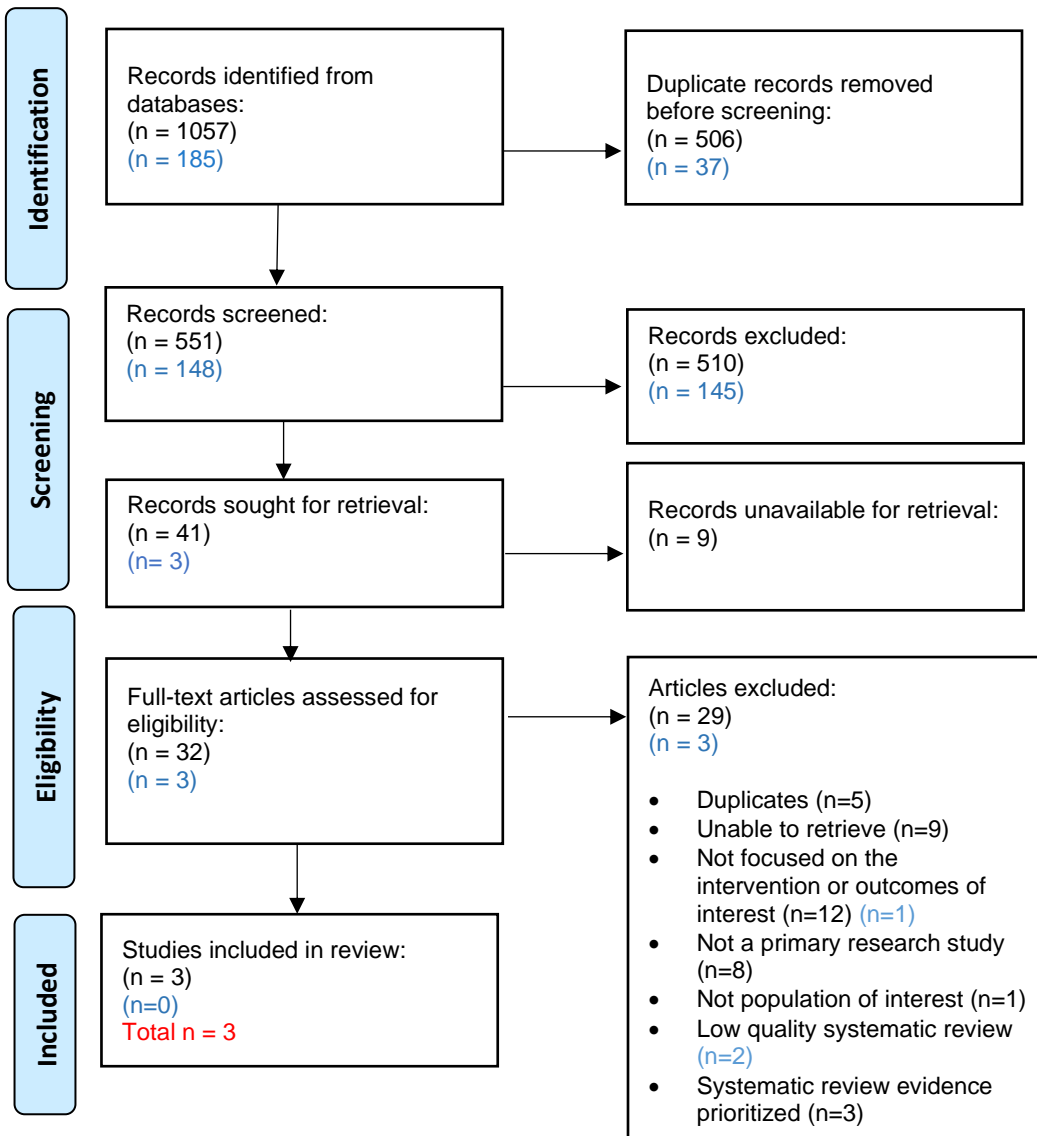
***As per GRADE methodology, the best available evidence is prioritized to answer each research question. Primary studies were excluded if a high-quality systematic review existed on a topic that examined an outcome outlined in the PICO question*

Article review process PRISMA diagram for recommendation question #2

Recommendation question #2: Should a specific repositioning frequency be recommended over another frequency for persons with pressure injuries or those at risk of developing them?

n = original search

n = update search



Source: Adapted from: Page M, McKenzie P, Bossuyt P, et al. The PRISMA 2020 statement: an updated guideline for reporting systematic reviews. Syst Rev. 2021;10(89). Available from: <https://doi.org/10.1186/s13643-021-01626-4>

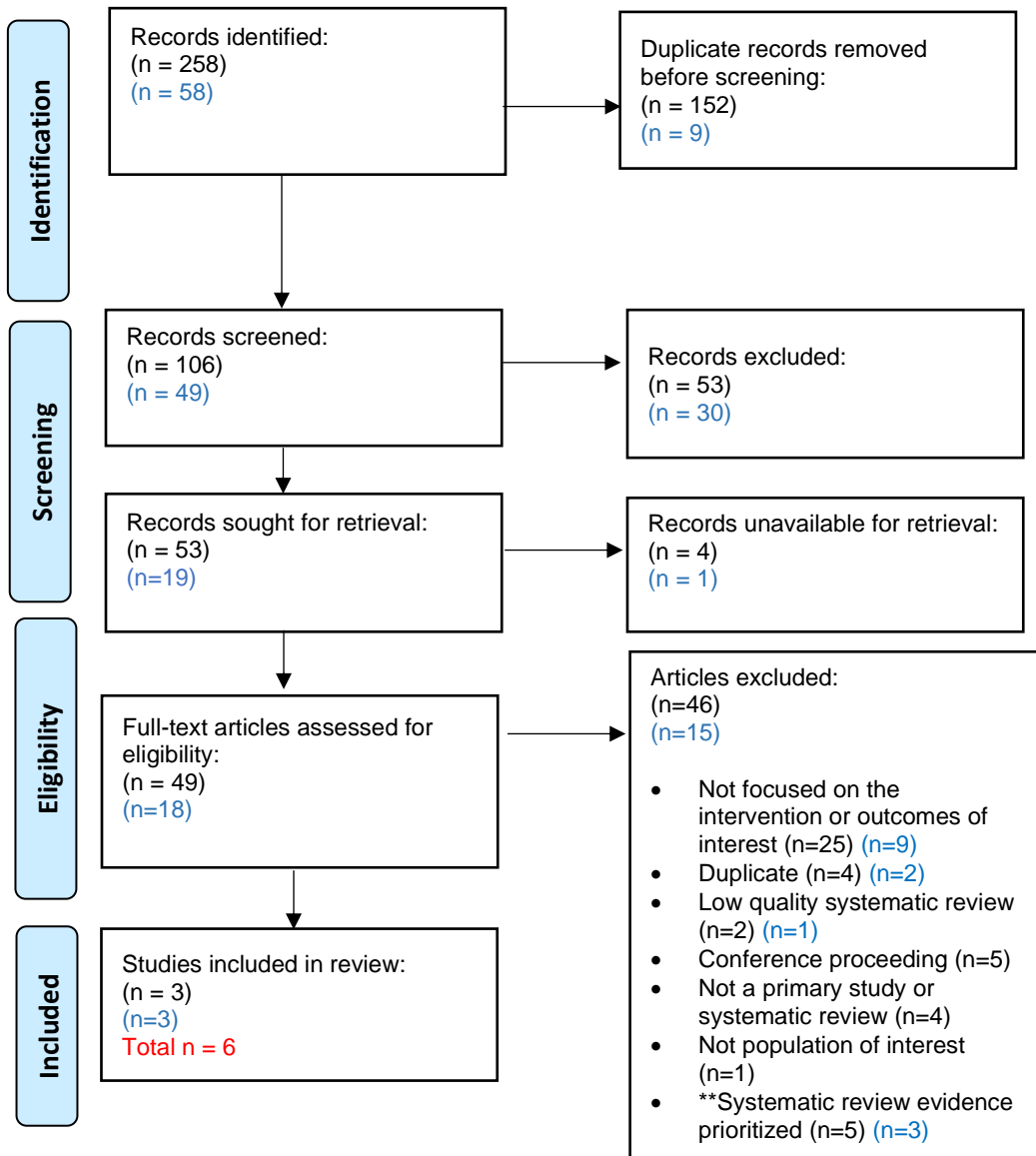
****As per GRADE methodology, the best available evidence is prioritized to answer each research question. Primary studies were excluded if a high-quality systematic review existed on a topic that examined an outcome outlined in the PICO question**

Article review process PRISMA diagram for recommendation question #3

Recommendation question #3: Should preventative care bundles be recommended or not for the prevention of pressure injuries?

n = original search

n = update search



Source: Adapted from: Page M, McKenzie P, Bossuyt P, et al. The PRISMA 2020 statement: an updated guideline for reporting systematic reviews. Syst Rev. 2021;10(89). Available from: <https://doi.org/10.1186/s13643-021-01626-4>

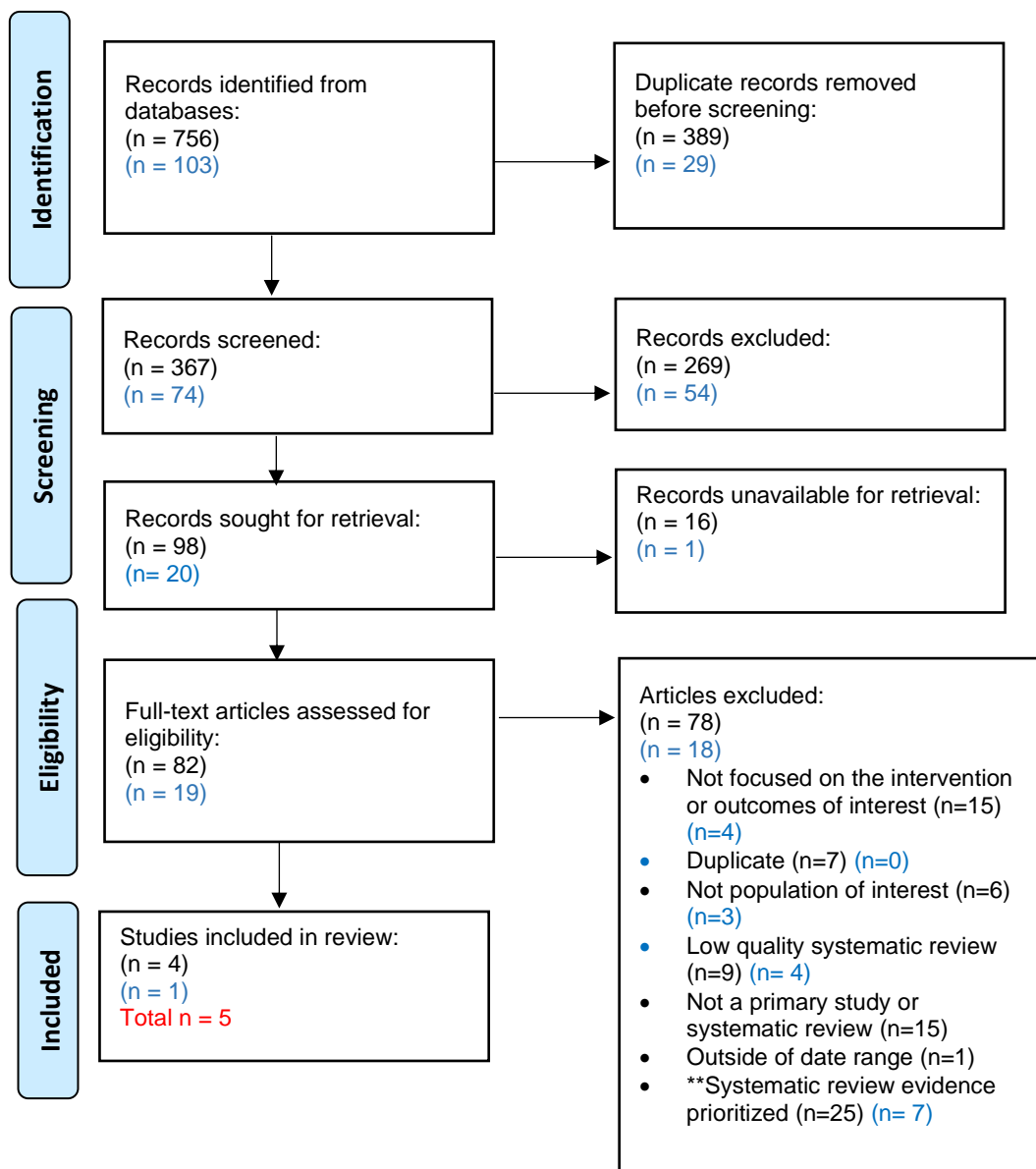
**As per GRADE methodology, the best available evidence is prioritized to answer each research question. Primary studies were excluded if a high-quality systematic review existed on a topic that examined an outcome outlined in the PICO question

Article review process PRISMA diagram for recommendation question #4

Recommendation question #4: Should the use of prophylactic dressings be recommended or not for the prevention of pressure injuries?

n = original search

n = update search



Source: Adapted from: Page M, McKenzie P, Bossuyt P, et al. The PRISMA 2020 statement: an updated guideline for reporting systematic reviews. Syst Rev. 2021;10(89). Available from: <https://doi.org/10.1186/s13643-021-01626-4>

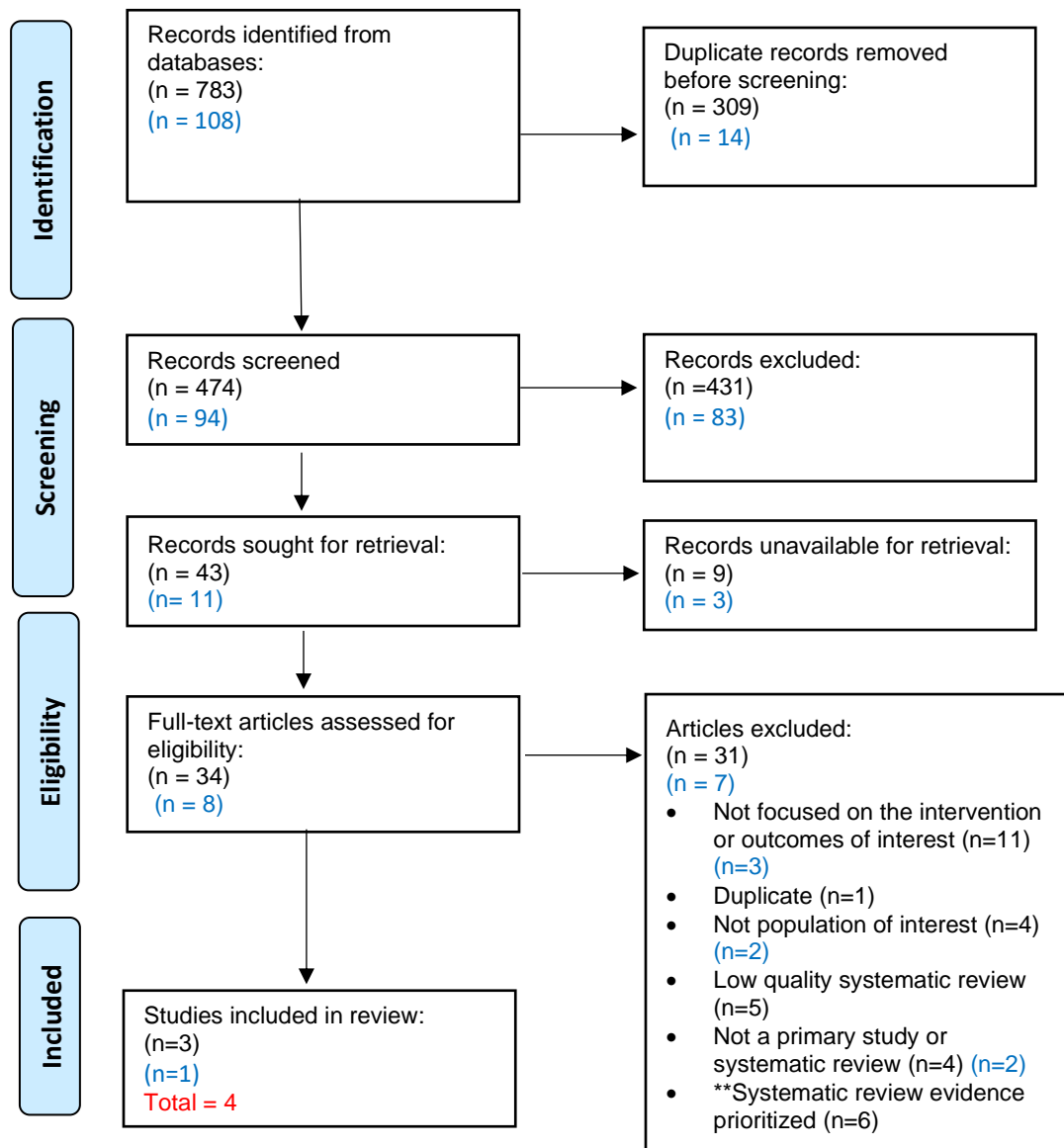
***As per GRADE methodology, the best available evidence is prioritized to answer each research question. Primary studies were excluded if a high-quality systematic review existed on a topic that examined an outcome outlined in the PICO question*

Article review process PRISMA Diagram for Recommendation Question #5

Scoping review question #5: Should the use of health technologies be recommended or not for the treatment of pressure injuries?

n = original search

n = update search



Source: Adapted from: Page M, McKenzie P, Bossuyt P, et al. The PRISMA 2020 statement: an updated guideline for reporting systematic reviews. Syst Rev. 2021;10(89). Available from: <https://doi.org/10.1186/s13643-021-01626-4>

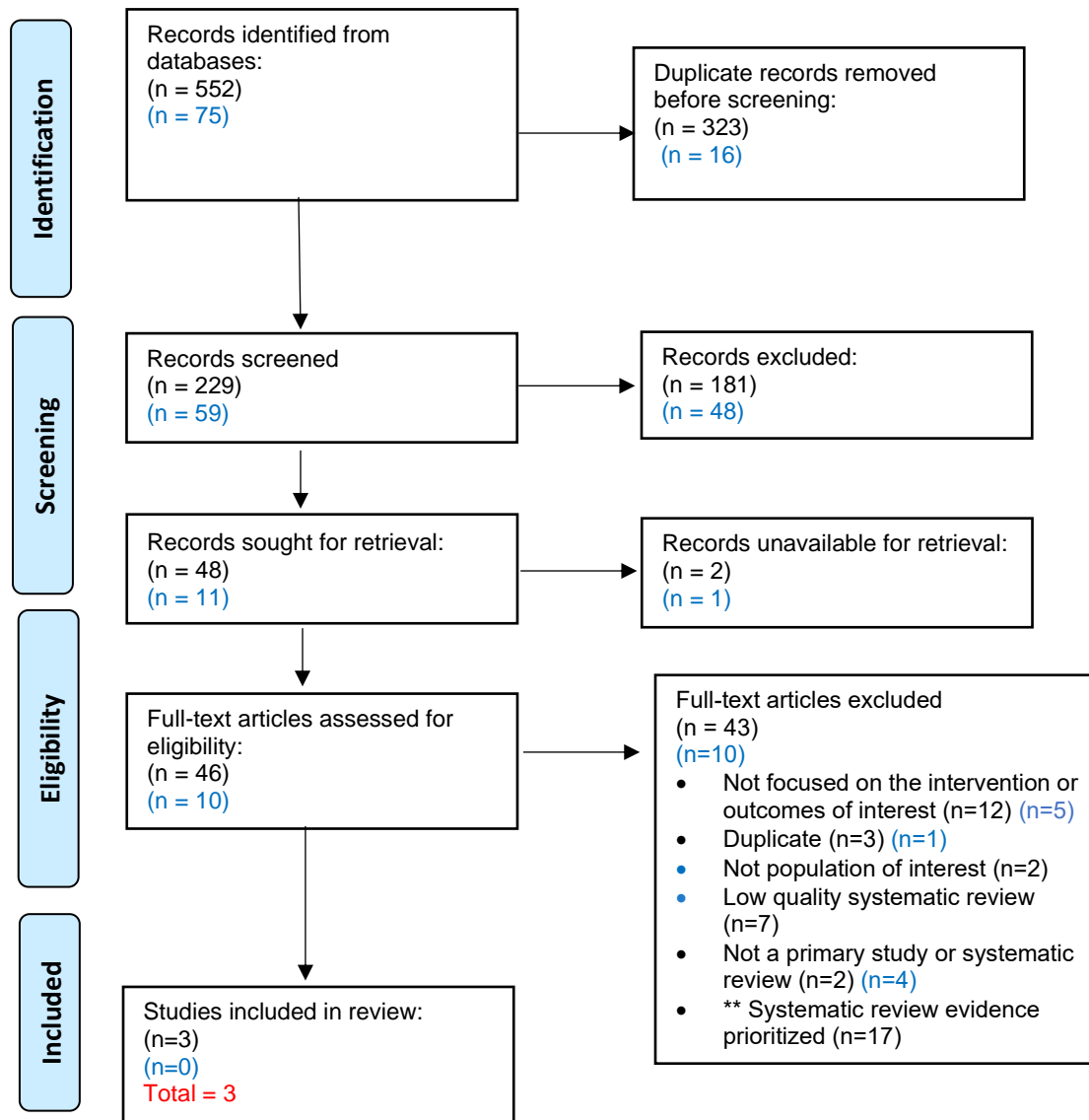
***As per GRADE methodology, the best available evidence is prioritized to answer each research question. Primary studies were excluded if a high-quality systematic review existed on a topic that examined an outcome outlined in the PICO question*

Article review process PRISMA Diagram for Recommendation Question #6

Scoping review question #6: Should the use of powered support surfaces (active or reactive) for the prevention and management of pressure injuries be recommended or not?

n = original search

n = update search



Source: Adapted from: Page M, McKenzie P, Bossuyt P, et al. The PRISMA 2020 statement: an updated guideline for reporting systematic reviews. Syst Rev. 2021;10(89). Available from: <https://doi.org/10.1186/s13643-021-01626-4>

****As per GRADE methodology, the best available evidence is prioritized to answer each research question. Primary studies were excluded if a high-quality systematic review existed on a topic that examined an outcome outlined in the PICO question**

References

1. Schunemann HJ, Wieroch W, Brozek J, et al. GRADE evidence to decision (EtD) frameworks for adoption, adaptation, and de novo development of trustworthy recommendations: GRADE-ADOLOPMENT. *J Clin Epidemiol.* 2017;81:101-10.