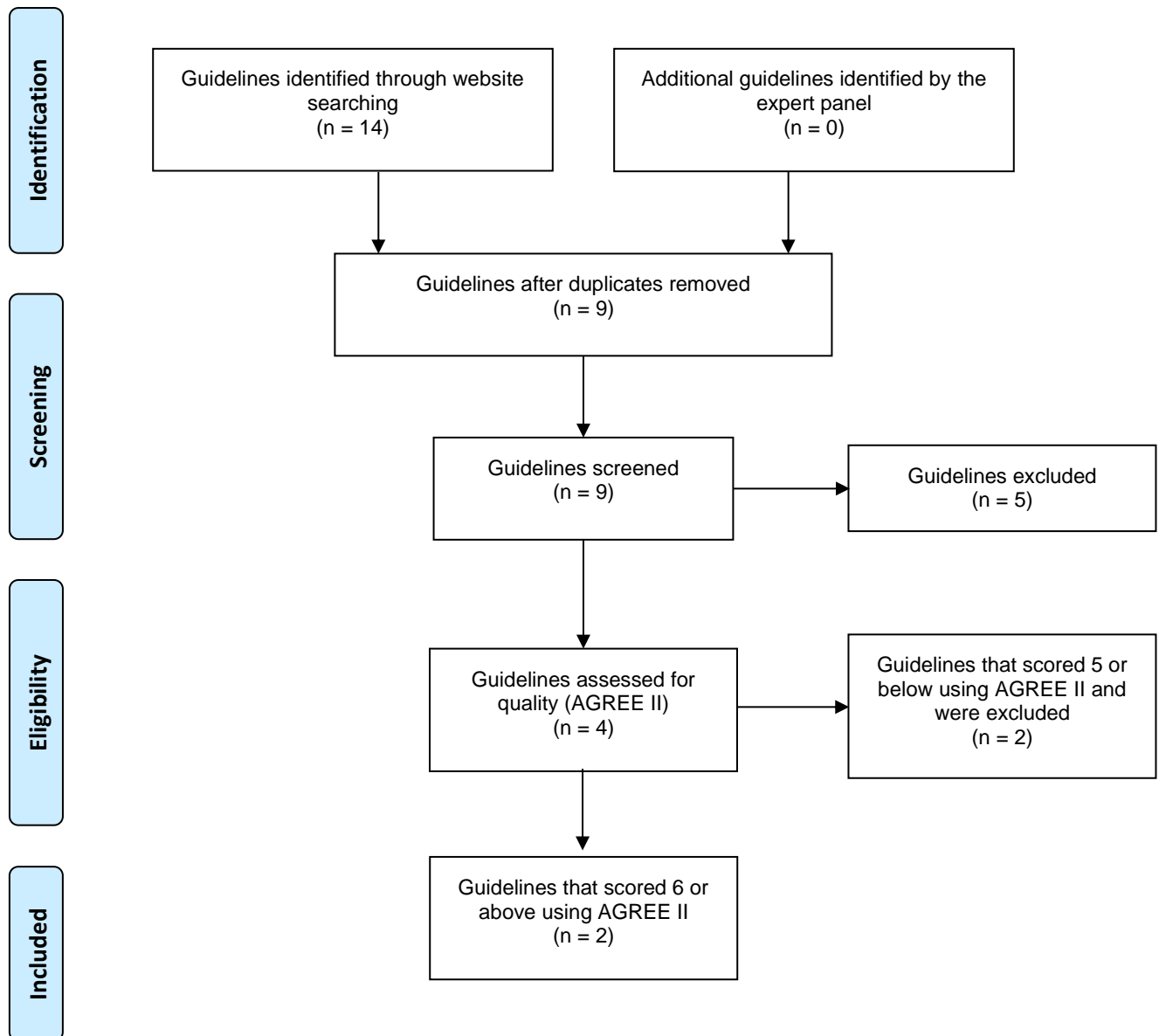


Registered Nurses' Association of Ontario
Diabetic foot ulcer: Prevention, assessment and management
Third Edition
October 2024

PRISMA diagrams for guideline search, systematic reviews, and scoping review

Guideline review process flow diagram



Included guidelines were considered for GRADE-ADOLOPMENT and required to have an overall AGREE II score of 6 or more (out of 7) (1). Although the expert panel did not identify any priority recommendations from the existing guidelines to be adopted or adapted for this BPG, two guidelines were used as supporting resources.

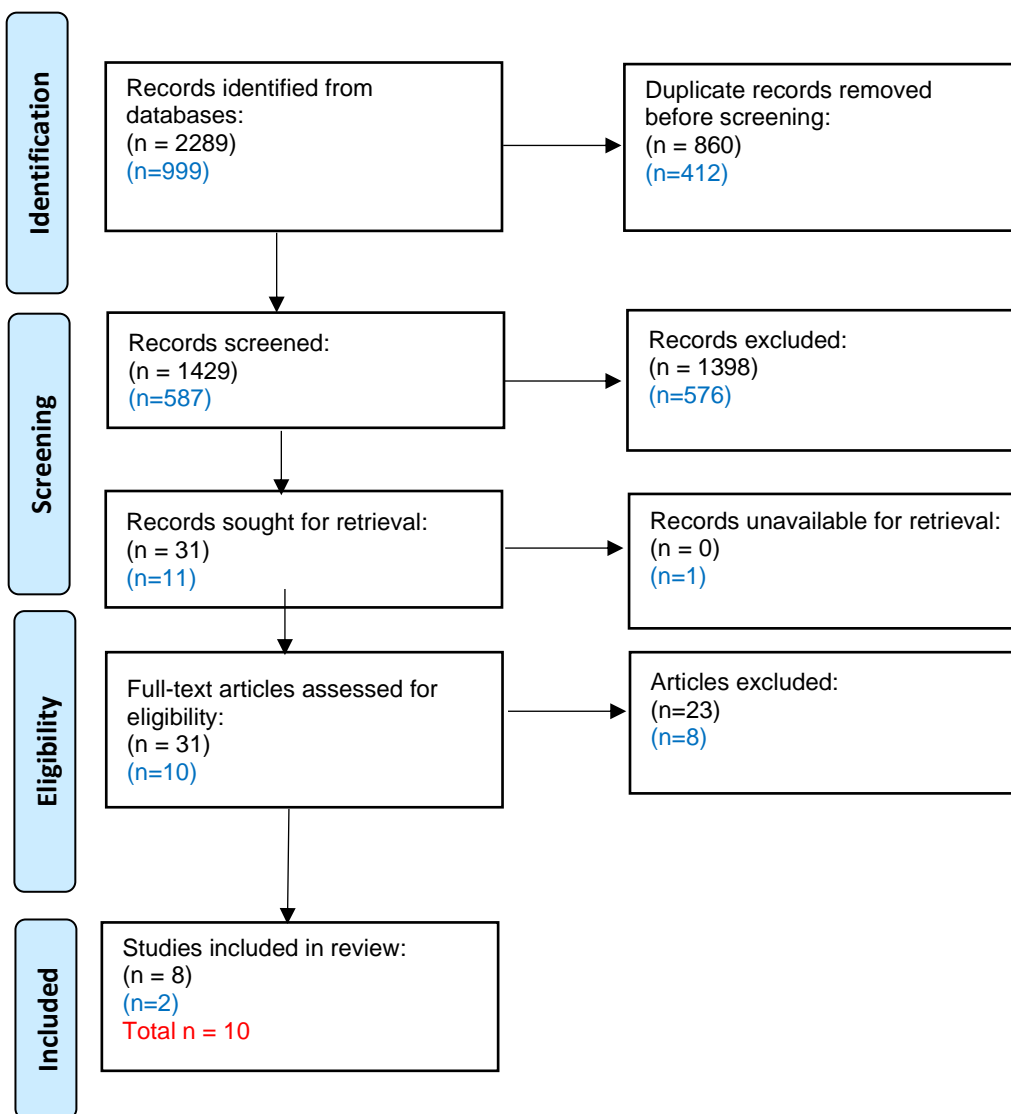
Source: Adapted from: Page M, McKenzie P, Bossuyt P, et al. The PRISMA 2020 statement: an updated guideline for reporting systematic reviews. Syst Rev. 2021;10(89). Available from: <https://doi.org/10.1186/s13643-021-01626-4>

Article review process PRISMA diagram for recommendation question #1

Recommendation question #1: Should person-engagement strategies be recommended or not for health providers delivering self-management support for diabetic foot care (e.g., motivational interviewing, cognitive behavioural therapy, or other psychosocial interventions)?

n = original search

n = update search



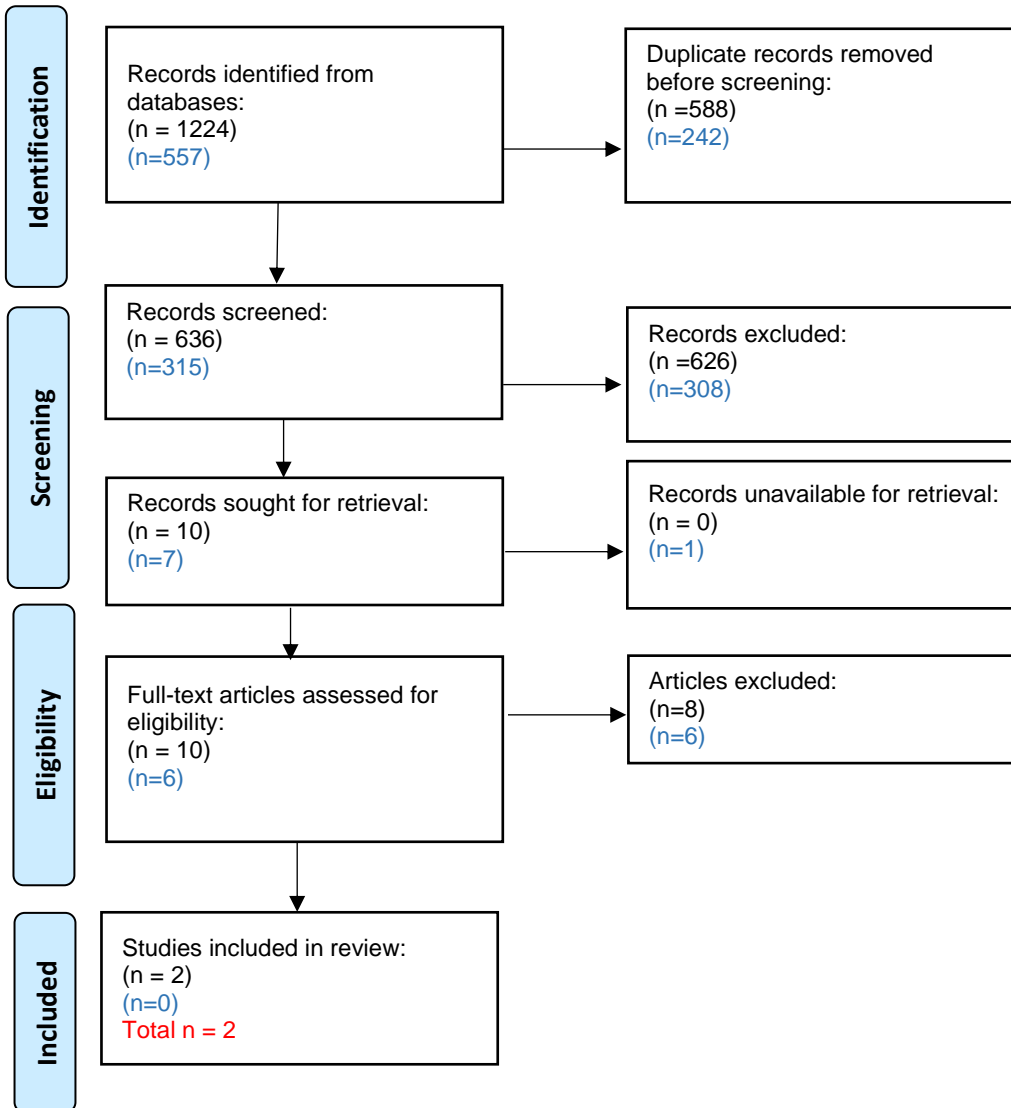
Source: Adapted from: Page M, McKenzie P, Bossuyt P, et al. The PRISMA 2020 statement: an updated guideline for reporting systematic reviews. Syst Rev. 2021;10(89). Available from: <https://doi.org/10.1186/s13643-021-01626-4>

Article review process PRISMA diagram for recommendation question #2

Recommendation question #2: Should self-screening for DFU risk assessment be recommended or not for persons at risk of or living with DFUs and their care partners?

n = original search

n = update search



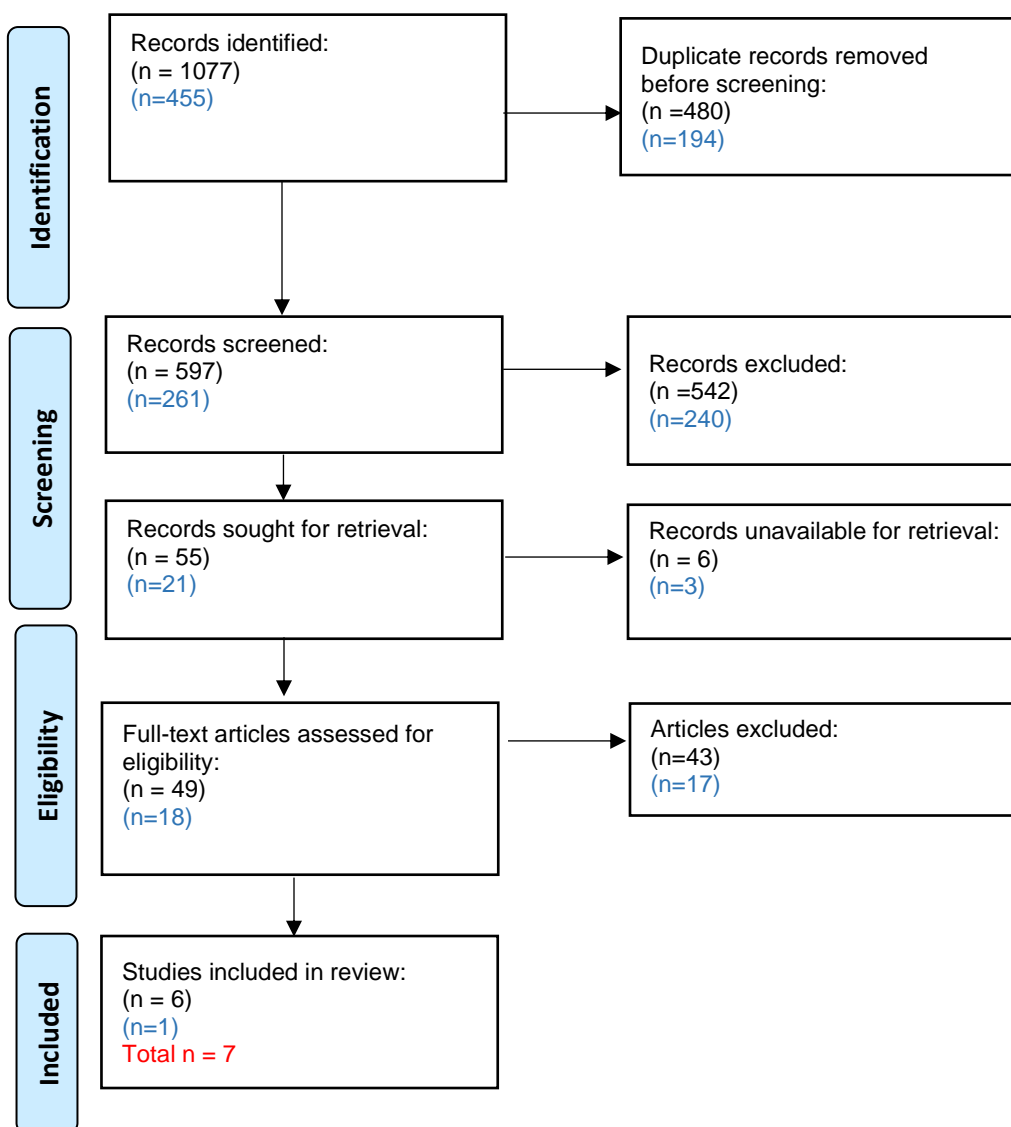
Source: Adapted from: Page M, McKenzie P, Bossuyt P, et al. The PRISMA 2020 statement: an updated guideline for reporting systematic reviews. Syst Rev. 2021;10(89). Available from: <https://doi.org/10.1186/s13643-021-01626-4>

Article review process PRISMA diagram for recommendation question #3

Recommendation question #3: Should support from a specialized wound care team be recommended or not for persons at risk of or living with DFUs?

n = original search

n = update search



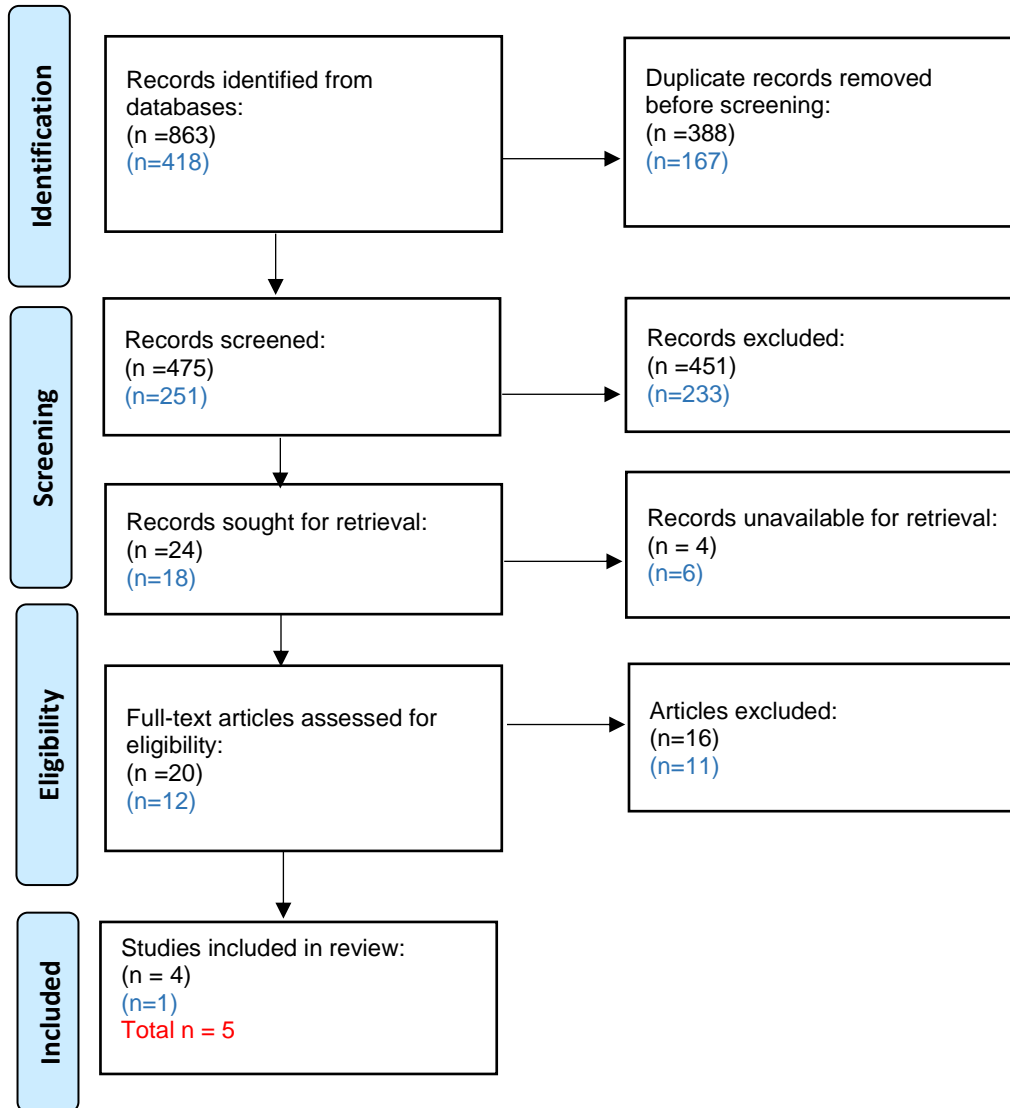
Source: Adapted from: Page M, McKenzie P, Bossuyt P, et al. The PRISMA 2020 statement: an updated guideline for reporting systematic reviews. Syst Rev. 2021;10(89). Available from: <https://doi.org/10.1186/s13643-021-01626-4>

Article review process PRISMA diagram for recommendation question #4

Recommendation question #4: Should virtual care (e.g., telepractice, social media) be recommended or not to support/supplement (in conjunction with in-person service) the delivery of diabetic foot care services?

n = original search

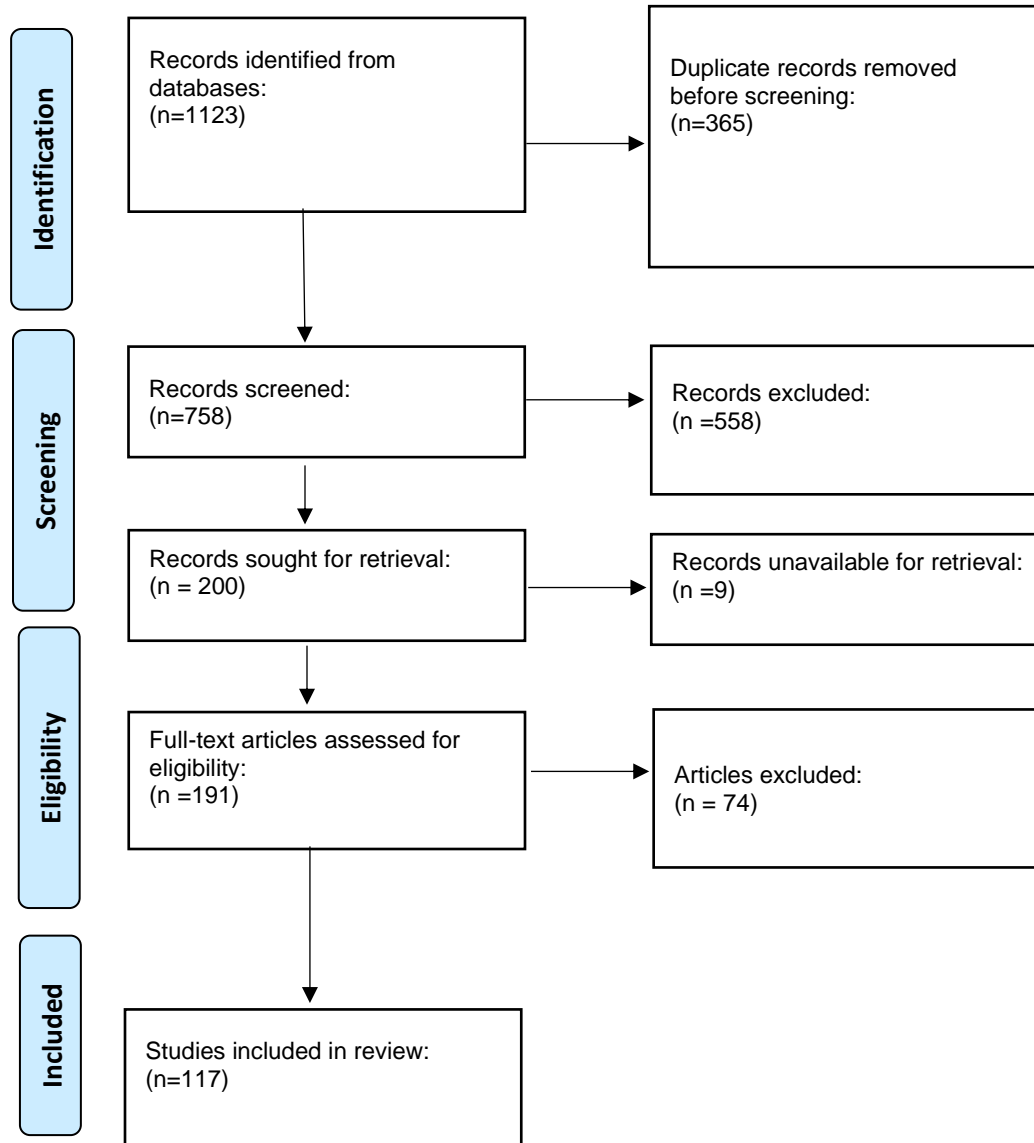
n = update search



Source: Adapted from: Page M, McKenzie P, Bossuyt P, et al. The PRISMA 2020 statement: an updated guideline for reporting systematic reviews. Syst Rev. 2021;10(89). Available from: <https://doi.org/10.1186/s13643-021-01626-4>

Article review process PRISMA Diagram for scoping review

Scoping review question: What cultural safety strategies or approaches to care can support adults living with diabetes and their health and well-being?



Source: Adapted from: Page M, McKenzie P, Bossuyt P, et al. The PRISMA 2020 statement: an updated guideline for reporting systematic reviews. Syst Rev. 2021;10(89). Available from: <https://doi.org/10.1186/s13643-021-01626-4>

References

1. Schunemann HJ, Wierioch W, Brozek J, et al. GRADE evidence to decision (EtD) frameworks for adoption, adaptation, and de novo development of trustworthy recommendations: GRADE-ADOLOPMENT. *J Clin Epidemiol.* 2017;81:101-10.